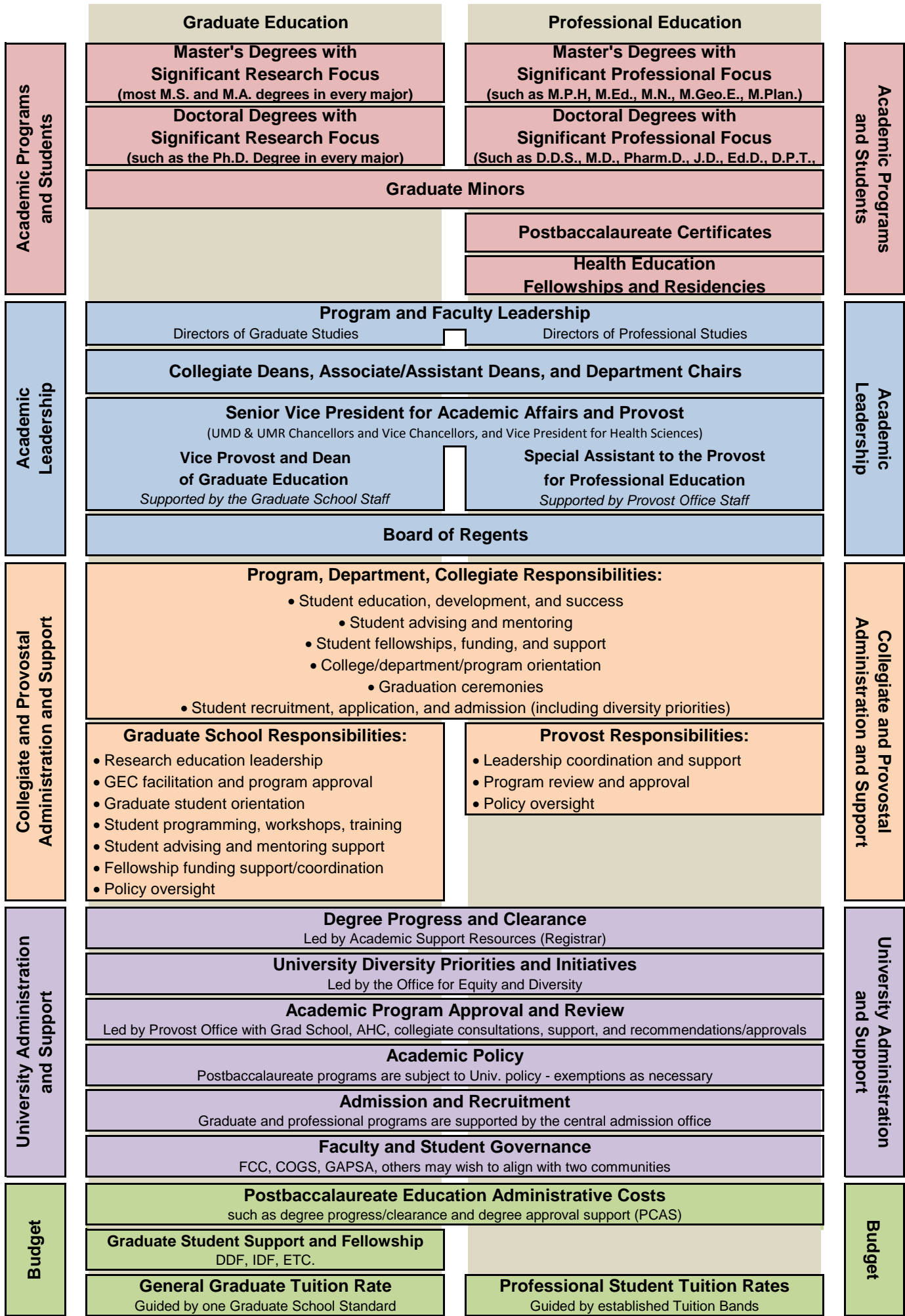


UNIVERSITY OF MINNESOTA

**Office of the Senior Vice President
for Academic Affairs and Provost**

**Graduate and Professional Education
Program Alignment**

October 2015 Version



Graduate Education

Graduate Master's Degrees

- Will include most M.S., M.A., and M.F.A. degrees
- Characteristics will guide which programs are aligned with the graduate community
- Characteristics of graduate degree programs include a preponderance of the following:
 - A major portion of the degree program involves research or creative activity and original scholarship.
 - Offering a Ph.D. degree option
 - Offering an M.S., M.A., and/or M.F.A. degree option
 - Including a master's degree option that requires a thesis comprising original scholarship conducted by the students
 - Including a master's degree option that requires an examination committee comprising graduate education faculty to assess a student's readiness for degree completion
 - Including a master's degree option that requires the completion of a research paper or a report of a research project
- Program/college and Grad School will determine alignment, Provost will decide if necessary
- Alignment will include all plan options, will not subdivide among subplans or programs

Research-based Doctoral Degrees

- Characteristics (above) will guide alignment
- Will include Ph.D. and D.M.A. degrees in every major
- Program/college and Grad School will determine alignment, Provost will decide if necessary
- Alignment will include all plan options, will not subdivide among subplans or programs

Graduate Minors

- Will be available to students in programs now aligned in professionally focused community except for students in programs formerly called First Professional (D.D.S., M.D., Pharm.D., D.V.M., J.D., L.L.M.)
 - Records administered by ASR

Professional Education

Professional Master's Degrees

- Will include degrees such as M.B.A, M.P.H, M.Ed., M.N., M.Geo.E., M.Ag., M.Plan.
- Characteristics will guide which programs are aligned with professional community
- Characteristics of professional degree programs include a preponderance of the following:
 - Attracting students whose primary objective upon completion is to acquire an applied professional or practice-based job outside the typical academic or research environment
 - Shaped by ethics or principles established by the respective industry or profession
 - Guided by quality standards enforced by a professional association or accreditation body
 - Requiring professional licensure or passage of examination to practice
- Still subject to University policy (see page 5)
- Program/college & Provost staff will determine alignment, Provost will decide if necessary
- Alignment will include all plan options, will not subdivide among subplans or programs

Professional Doctoral Degrees

- Characteristics (above) will guide alignment
- D.D.S., M.D., Pharm.D., J.D., D. V.M., Ed.D., D.P.T., D.N.P. Degrees
- Program/college & Provost staff will determine alignment, Provost will decide if necessary
- Alignment will include all plan options, will not subdivide among subplans or programs

Postbaccalaureate Certificates

- Records administered by ASR

Health Education Fellowships and Residencies

- Continue to be administered by collegiate units with support from AHC Office of Education

Program and Faculty Leadership

- Departments and faculty are the most significant participants in designing and guiding postbaccalaureate experiences

Directors of Graduate Studies (DGS)

(could be the same person as Director of Professional Studies if desired)

Directors of Professional Studies (DPS)

(could be the same person as DGS if desired)

Collegiate Deans, Associate/Assistant Deans, and Department Chairs

- Colleges continue to be the degree granting homes
- In some exceptions, the Graduate School will continue to be the degree granting home for programs delivered jointly between 2 or more colleges

**Senior Vice President for Academic Affairs and Provost
(UMD & UMR Vice Chancellors, and Vice President for Health Sciences)**

- The Provost and Vice Chancellors have high-level responsibility or authority for all academic programs
- The Vice President for Health Sciences provides coordination and leadership across health-related academic programs

**Vice Provost and Dean
for Graduate Education**

- Supported by the Graduate School Staff
- Charged with positioning graduate education for excellence
- Charged with providing general policy oversight
- Assists Provost with quality oversight responsibilities currently charged to her position

**Special Assistant to the Provost
for Professional Education**

- Supported by the Provost Office Staff
- Charged with coordinating professional program leaders in the identification and addressing of issues
- Charged with providing general policy oversight
- Assists Provost with quality oversight responsibilities currently charged to her position

Board of Regents

- Broad-level Governance
- Academic Program Approval
- Tuition Structure and Rates Approval

Academic
Leadership

Graduate Education

Professional Education

Program, Department, Collegiate Responsibilities:

- Student education, development, and success
 - Student advising and mentoring
- Student fellowships, funding, and support
- College/department/program orientation
 - Graduation ceremonies
- Student recruitment, application, and admission (including diversity priorities)

Graduate School Responsibilities

(Vice Provost and Dean of Graduate Education)

- The Vice Provost leads the Graduate School and the University's graduate education strategy
- Research education leadership
- Graduate Education Council (GEC) facilitation and program approval
- Graduate student orientation
- Recruitment and application support
- Student programming, workshops, training
- Student advising and mentoring support
- Fellowship funding support/coordination
- Policy oversight
- Leadership with joint and early admission programs

Provost Responsibilities

(Special Assistant to the Provost)

- Special Assistant aids Provost in addressing responsibilities
- Leadership coordination and support
- Program review and approval
- Policy Oversight
- Leadership with joint and early admission programs

**Collegiate and Provostal
Administration and Support**

Graduate Education

Professional Education

Academic Records and Degree Progress and Clearance

- Led by Academic Support Resources (the Registrar)

University Diversity Priorities and Initiatives

- Led by the Office for Equity and Diversity

Academic Program Approval and Review

- Academic Program Review is designed to be a holistic evaluation of graduate and professional education as well as undergraduate education, research, resources, etc.
 - Led by Provost Office with Grad School, AHC, collegiate support and approvals or consultation
- Proposals for new, changed, or discontinued programs will be sent by the colleges to the Provost Office, who will engage the Grad School, Spec Assistant, and AHC as appropriate

Academic Policy

- Postbaccalaureate programs are subject to University Education policy except those granted an exemption: those previously known as 1st professional (D.D.S., M.D., D.V.M., Pharm.D., L.L.M., J.D.) and the M.B.A (TC campus)
- Special Assistant to the Provost for Professional Education will facilitate the consideration of other exemptions as needed
- Special Assistant to the Provost for Professional Education will lead discussions with exempt programs about ensuring that their policy needs are met, including the possibility of including them under some policies or adjusting wording in policy to meet their needs

Admission and Recruitment

- Services of the Graduate and Professional Admissions office are available to all University post-baccalaureate programs.
- These services include: Institutional data maintenance; University admissions policy and legal Compliance; Central campus advising resource for prospective students, faculty, and staff; Admissions technology: managing enterprise-level admissions and recruiting systems; creating customized solutions for graduate programs; providing access, training, and support for staff and faculty; Application processing and University record creation for new, current, and returning students; Document imaging; International and domestic credential evaluation services; International I-20 visa document production and advising; Supporting college/program recruitment efforts; Outreach to prospective students and other external constituents; Professional development for faculty and staff - orientations, programming, workshops, etc.
- Final decisions remain with the college/academic programs. First professional programs may continue to be exempt from the University's requirement to use this central admissions office and its services.

Faculty and Student Governance

- Continue to be served by FCC, SCEP, COGS, GAPSA
- Faculty and student governance groups may wish to align with Research- and prof-focused distinctions

Graduate Education

Professional Education

Postbaccalaureate Administration

- Postbaccalaureate administrative costs allocated to existing, campus-wide Support Service-Twin Cities Cost Pool
- Includes costs associated with the maintenance of cross service functions such as degree clearance, academic program approval, and Postbaccalaureate Diversity Office (see University Administration and Support on page 5)

Graduate Student Support and Fellowship

- Doctoral Dissertation Fellowship (DDF)
- Interdisciplinary Doctoral Fellows (IDF)
- Thesis Research Travel Grant
- Quality Assessment Allocation Plan

General Graduate Tuition Rate

- Programs will follow a common tuition rate and structure (the “Graduate School” rate).
- The Board of Regents retains the authority to approve all tuition rates.

Professional Program Tuition

- Programs may set their own tuition rate and structure
- The Board of Regents retains the authority to approve all tuition rates
- Future discussions will consider establishing set bands for Professionally focused programs such as same as General Graduate Tuition Rate, a little higher, much higher, a little lower, much lower
- Tuition rates outside the band rates would be possible as needed.

Funding Postbaccalaureate Education Programs